

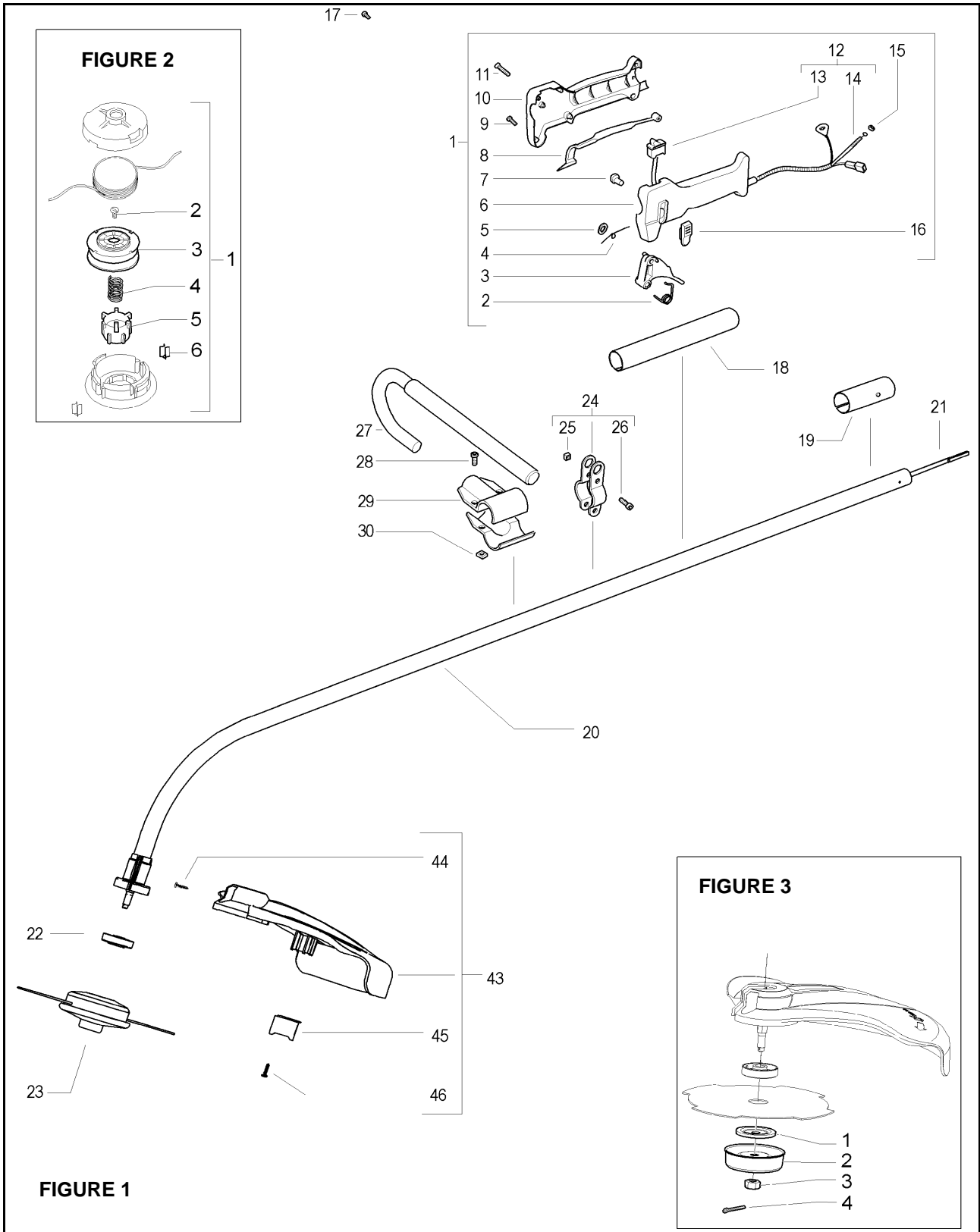
HUSQVARNA OUTDOOR PRODUCTS ITALY



PNC	Type/Prefix/nd	Model	Brand
953900242	04	CABRIO 246	McCULLOCH
953900249	04	B 246	PARTNER

Number of Pages 1 of 5

Factory: IIQ - Valmadrera	Product Group: OP 93
Publication Number: MIPL2006_V030000001	Petrol Portable
Publication Date: 18/01/06	Sub Group 9433



Item	P/N McC	P/N ELX	Qty	DESCRIPTION
FIGURE 1				
1	227280	538227280	1	trigger box assy
2	• 240019	538240019	1	throttle trigger spring
3	• 241296	538241296	1	throttle trigger
4	• 229973	538229973	1	throttle advance spring
5	• 227065	538227065	1	retain ring
6	• 229837	538229837	1	trigger box (left half)
7	• 229823	538229823	1	throttle advance pin
8	• 229819	538229819	1	safety lever
9	• 240618	538240618	2	screw 3x16
10	• 229836	538229836	1	trigger box (right half)
11	• 240883	538240883	4	screw 3x20
C 12	• 227067	538227067	1	cable assy
C 13	•• 236394	538236394	1	switch
C 14	•• 227073	538227073	1	throttle cable
15	• 235912	538235912	1	nut M6
16	• 229824	538229824	1	throttle advance slide
17	236981	538236981	2	screw
18	241727	538241727	1	shaft sheathing (handle)
19	241838	538241838	1	shaft sheathing (joint)
C 20	242935	538242935	1	shaft assy
C 21	241733	538241733	1	flexible shaft
22	241734	538241734	1	flange adapter
A 23	FIGURE 2		1	string head
24	248222	538248222	1	harness ring assy
25	• 236642	538236642	2	nut M6
26	• 235911	538235911	2	screw M6x12
27	241736	538241736	1	front handle
28	235911	538235911	2	screw M6x12
29	228146	538228146	2	clamp
30	235542	538235542	2	nut M6
43	249242	538249242	1	guard assy
44	• 240862	538240862	2	screw 4x18
45	• 241973	538241973	1	line cutter
46	• 240862	538240862	2	screw 4x18

Item	P/N McC	P/N ELX	Qty	DESCRIPTION
FIGURE 2				
A 1	538249345	538249345	1	string head
2	• 249381	538249381	1	set screw
C 3	• 249382	538249382	1	reel
C 4	• 249383	538249383	1	spring
C 5	• 249384	538249384	1	button
C 6	• 249385	538249385	2	eyelet

Item	P/N McC	P/N ELX	Qty	DESCRIPTION
FIGURE 3				
A 1	236621	538236621	1	blade plate
A 2	236596	538236596	1	cup
A 3	241739	538241739	1	nut
A 4	236728	538236728	1	pin
3	• 530053241	530053241	1	spring
4	• 530401957	530401957	1	spool retainer
B 5	• 248286B	538248286	1	line (2mm)

A=ALTA ROTAZIONE
 B=MEDIA ROTAZIONE
 C=ALTA ROTAZIONE
 NUOVI CODICI

A=HIGH MOVING
 B=MEDIUM MOVING
 C=SLOW MOVING
 NEW P. NUMBERS

A=HAUTE DEMANDE
 B=MOYENNE DEMANDE
 C=BASSE DEMANDE
 NOUVELLES REFERENCES

A=GROBE NACHFRAGE
 B=MITTELMAESSIGE
 C=WENIGE NACHFRAGE
 NEU CODEX

FIGURE 5

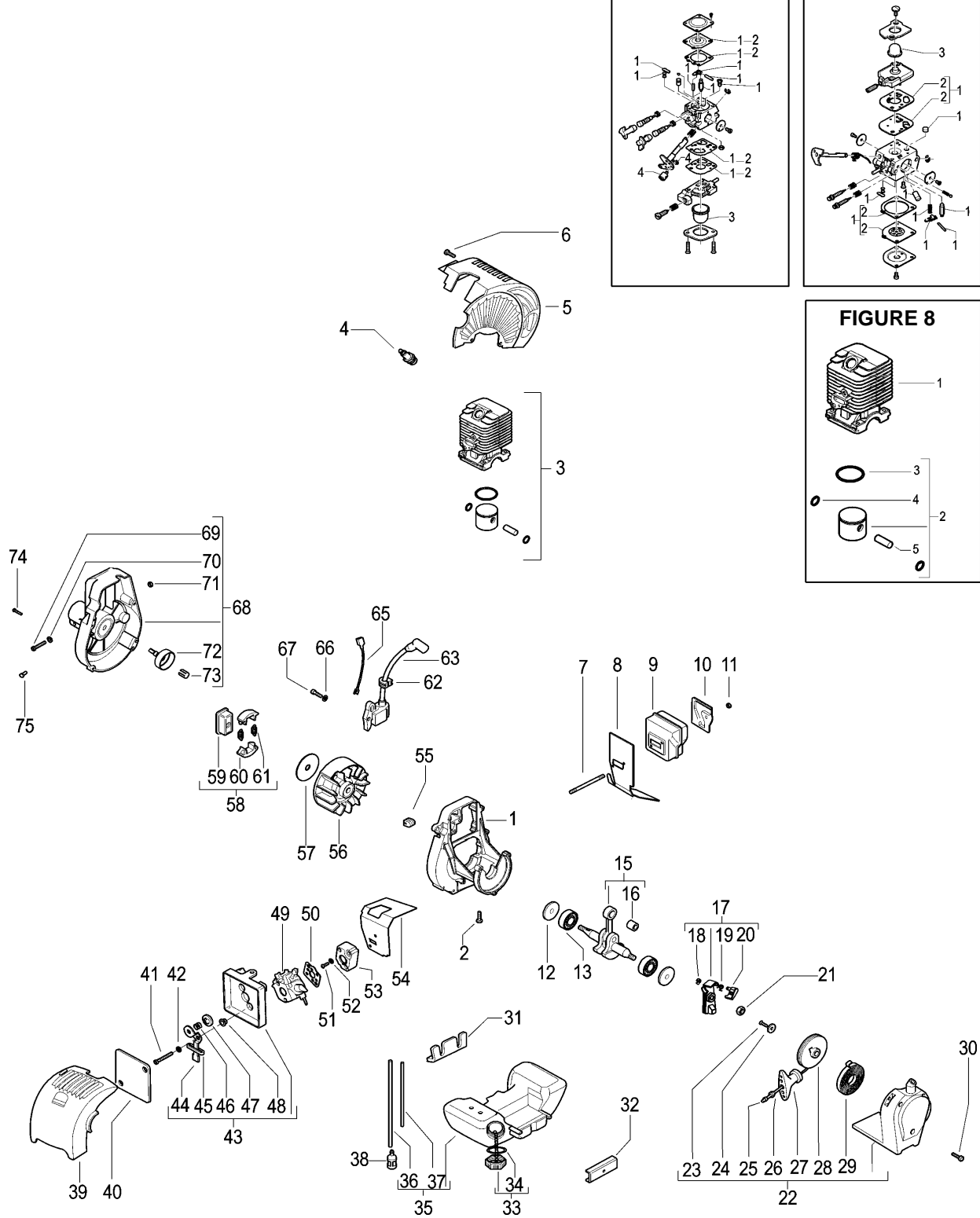


FIGURE 6

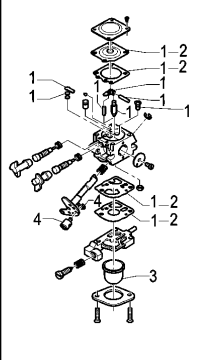


FIGURE 7

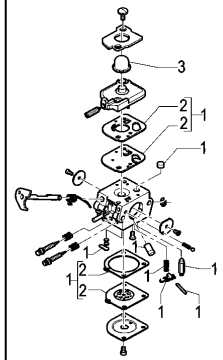
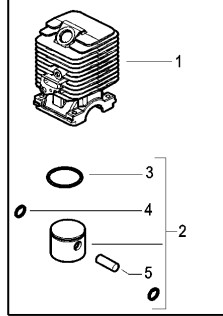


FIGURE 8



Item	P/N McC	P/N ELX	Qty	DESCRIPTION
FIGURE 5				
1	242802	538242802	1	crankcase
2	227565	538227565	4	screw M5x25
3	FIGURE 8			
A 4	92879	538092879	1	spark plug RDJ8J
5	242704	538242704	1	engine cover
6	241963	538241963	2	screw M4x22
7	242037	538242037	2	stud bolt
B 8	243273	538243273	1	exhaust gasket
C 9	242131	538242131	1	muffler
10	323760	538323760	1	muffler shield
11	235642	538235642	2	nut M5
C 12	242994	538242994	2	seal
C 13	241594	538241594	2	ball bearing
15	243486	538243486	1	crankshaft assy
C 16	• 235742	538235742	1	needle bearing
17	241784	538241784	1	starter pawl assy
18	• 111088	538111088	1	snap ring
19	• 241782	538241782	1	spring
20	• 241781	538241781	1	pawl
21	235248	538235248	1	nut
C 22	242041	538242041	1	starter assy
23	• 240862	538240862	1	screw M4x18
24	• 241703	538241703	1	washer
A 25	• 241746	538241746	1	rope
26	• 235612	538235612	1	washer
27	• 241778	538241778	1	handle
B 28	• 241620	538241620	1	pulley
B 29	• 241619	538241619	1	spring
30	241963	538241963	3	screw M4x20
31	242038	538242038	1	tank grommet (crankcase side)
32	242039	538242039	1	tank grommet (starter side)
B 33	242484	538242484	1	fuel tank cap assy
A 34	• 236564	538236564	1	gasket
C 35	242040	538242040	1	fuel tank assy
B 36	• 229717	538229717	1	hose
B 37	• 229743	538229743	1	primer bulb hose
A 38	93720	538093720	1	fuel pickup
39	242703	538242703	1	air filter cover
B 40	242035	538242035	1	air filter
41	235808	538235808	2	screw 5x50
42	235248	538235248	1	washer
43	248485	538248485	1	air box assy
44	• 241769	538241769	1	choke lever
45	• 241622	538241622	1	choke lever grommet
46	• 235822	538235822	1	spring
47	• 241602	538241602	1	choke shutter
48	• 227022	538227022	2	bushing
C 49	FIGURE 6 / FIGURE 7			
A 50	241600	538241600	1	carb. Gasket
51	235806	538235806	2	screw M5x20
52	235248	538235248	2	washer

Item	P/N McC	P/N ELX	Qty	DESCRIPTION
B 53	241750	538241750	1	carb. Spacer
B 54	242860	538242860	1	intake gasket
55	241607	538241607	1	grommet
56	243311	538243311	1	flywheel
57	241604	538241604	1	dust shield
B 58	241793	538241793	1	clutch assy
59	• 241789	538241789	1	clutch hub
60	• 241743	538241743	2	clutch shoe
A 61	• 241794	538241794	2	clutch spring
62	236322	538236322	1	grommet
C 63	243429	538243429	1	ignition coil
65	241606	538241606	1	ground wire
66	235248	538235248	2	washer
67	235806	538235806	2	screw M5x20
C 68	241725	538241725	1	joint assy
69	• 235803	538235803	1	screw M5x25
70	• 235248	538235248	1	washer
71	• 229524	538229524	1	nut M5
72	• 241785	538241785	1	clutch drum
73	• 228260	538228260	1	pin
74	227568	538227568	4	screw M4x20
75	236981	538236981	1	screw 3,5x9,5

FIGURE 6 WALBRO WT 686				
C -	242932	538242932		carb.
B 1	• 324013	538324013		K20 rep. Kit
A 2	•• 324009	538324009		D20 gasket kit
C 3	• 225834	538225834		primer bulb
4	• 224466	538224466		swivel kit

FIGURE 7 ZAMA C1Q M38				
C -	-	-		carb.
B 1	• 300465	538300465		RB-28 rep.kit
A 2	•• 300473	538300473		diaph/gasket kit
C 3	• 246946	538246946		primer bulb

FIGURE 8 cylinder, piston 25cc				
C 1	242803	538242803	1	cylinder
C 2	248177	538248177	1	piston kit
B 3	• 240002	538240002	1	piston ring
4	• 235008	538235008	2	snap ring
5	• 241735	538241735	1	piston pin

FIGURE 8 cylinder, piston 29cc				
C 1	243076	538243076	1	cylinder
C 2	249179	538249179	1	piston kit
B 3	• 242602	538242602	1	piston ring
4	• 235008	538235008	2	snap ring
5	• 241735	538241735	1	piston pin

A=ALTA ROTAZIONE	A=HIGH MOVING	A=HAUTE DEMANDE	A=GROBE NACHFRAGE
B=MEDIA ROTAZIONE	B=MEDIUM MOVING	B=MOYENNE DEMANDE	B=MITTELMAESSIGE
C=ALTA ROTAZIONE	C=SLOW MOVING	C=BASSE DEMANDE	C=WENIGE NACHFRAGE
NUOVI CODICI	NEW P. NUMBERS	NOUVELLES REFERENCES	NEU CODEX